

SHEFFIELD
END UNITS
2321, 2381

LIVING AREA
2648 sq. ft.

BEDROOMS **3**

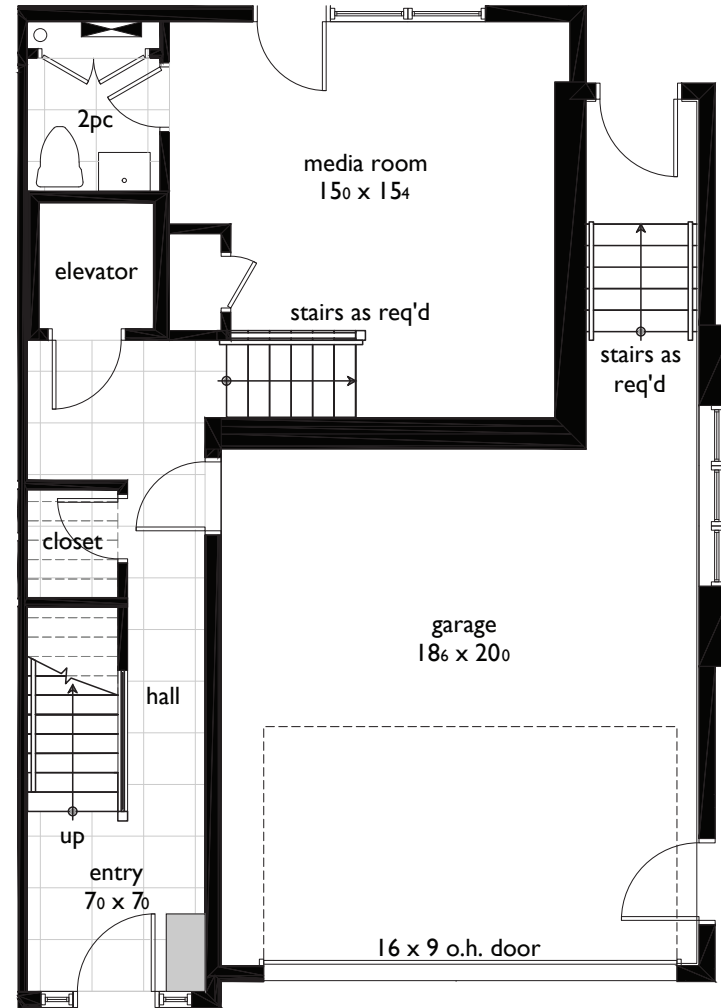
BATHROOMS
2 FULL / 2 HALF

ATTACHED
2 CAR GARAGE

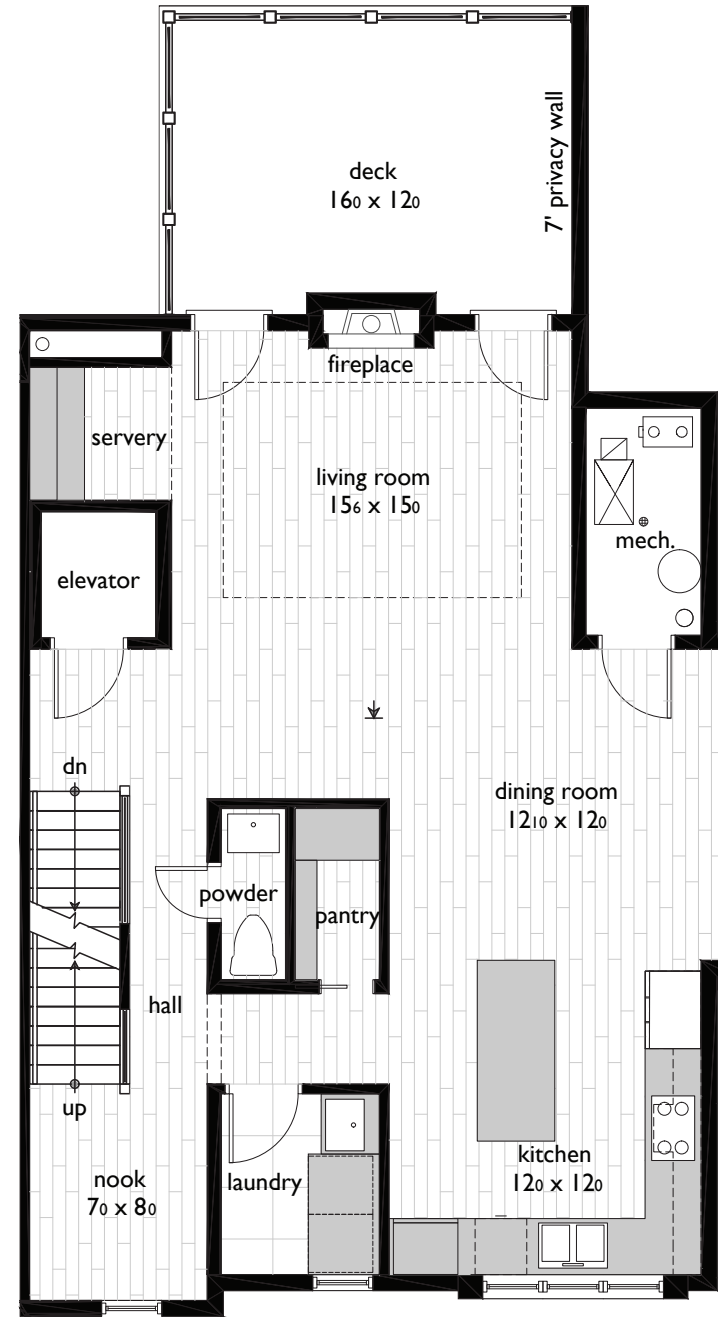
PERSONAL ELEVATOR



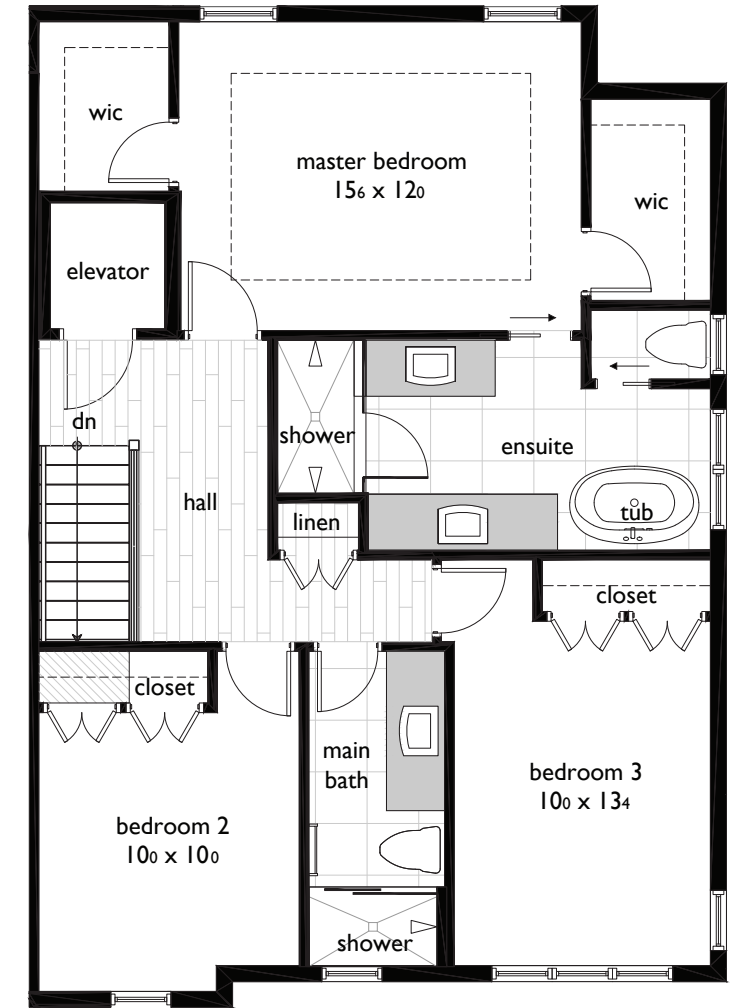
Large Walk-in Shower with Rainhead



Entry Level



Living Level



Sleeping Level

CALLINGHAM
MEWS LUXURY TOWNS

Artistic rendering subject to change. Illustration may show optional features which may not be included in the base price. Specifications subject to change without notice. E&O.E.

johnstonehomes.ca

AN EXCITING NEW MODERN TOWNHOME COMMUNITY BROUGHT TO YOU BY THE AWARD WINNING

Johnstone
HOMES